



An ISO 9001-2008 Certified Company



**Corporate Office :-**

1026, Shivalik Satyamev, Near Vakil Saheb Bridge,  
S.P. Ring Road, South Bopal, Ahmedabad-380058.  
Gujrat (Bharat)

**Factory & Registered Office :**

Plot No. 205-206, Kerala GIDC Estate,  
Off NH-8, At : Kerala, Ta.: Bavla,  
Dist. : Ahmedabad-382220, Gujarat (Bharat).

+91 2717-461065

info@sterlingagrchem.com.

www.sterlingagrchem.com

Miracle Design - 9228125884



## OUR VISION

To be the most preferred source for our esteemed customers

## OUR MISSION

To provide quality service that exceeds the expectations of our customers and making agriculture more cost economic and sustainable by way of understanding the exact need of our customers.

## OUR GOAL

To make a word "STERLING" synonym of quality products and service



## OUR VALUE

Quality is never an accident, It is always the result of intelligent effort, there must be a will to produce superior things

## અમારી અગત્યતા

ગુણવત્તા એ કોઈ આકસ્મિક રીતે નથી જળવાતી પણ તે એક સર્વોત્તમ બૌદ્ધિક પ્રયાસો દ્વારા જ શક્ય છે. ઉચ્ચ ગુણવત્તા યુક્ત ઉત્પાદનો માટે એક પ્રબળ ઈચ્છા શક્તિ હોવી જરૂરી છે



An ISO 9001-2008 Certified Company



# COMPANY PROFILE



**Mr. Sanjay E. Akhed**  
(Director)

Sterling Agrichem Pvt. Ltd. is a leading producer and global marketer of Agricultural Insecticide, Fungicide, Herbicide, Weedicides, House Hold and Row-material. Our strategy is to grow through incremental expansion of its existing operations and acquisitions as well as the development, commercialization and marketing of new products and international opportunities. The aim of both our directors is that every product of the company should be manufactured within the company's own factory and under its own supervision, Theirfor Every product that is sold in our market is made and sold by the company itself.

In today's age of competition every company has to engage in online business to do more and more business, which is having a huge impact on retail and wholesale business, as well as the quality of the product is deteriorating due to the mere sight of price in online business. But in this situation our company stands with distributors and does not trade online and only trades with wholesale distributors, The company's focus is solely on promoting its business through distributors.

The demand for agricultural products is increasing rapidly. Keeping this demand in mind and increasing farm production to increase the strength of India, Sterling Agrichem Pvt. Ltd. presents the following product range :

- ▶ Insecticide
- ▶ Fungicide
- ▶ Herbicide
- ▶ Weedicides
- ▶ House Hold

Along with modern production techniques our success stems from serving our patrons by delivering quality products, on time and at right process. This eliminates the need for our clients to maintain multiple suppliers making their business both efficient and effective. We are admired because of our ability to provide fast and reliable service consistently. Quality could be a challenger for most other companies, but for us, it is our strength. And thus quality doesn't end with products; we continue the tradition of quality with our services also.

We have well trained and dedicated team of professionals having extensive experience in the manufacture of a wide range of Agro Chemicals Products. Our employees are continuously trained and update their knowledge base, to keep abreast of the changing business environment in India. Our automated plant also incorporates state of the art technology in the field of safety, manufacturing, packaging, processing, analysis and testing. Our testing and quality control labs with highly trained personnel, carry out all the prescribed tests, analytical procedures etc.



**Mr. Sanjay N. Akhed**  
(Director)

QUALITY ■ COMMITMENT ■ ABILITY



WORLD CLASS EXPORT QUALITY PRODUCTS AT INDIAN RATE

**AC-PHATE**

Acephate 75% SP

**PACKING :**  
100 ml, 250 gm, 500 gm,  
1 kg.



**AC-PHATE GOLD**

Acephate 50% +  
Imidacloprid 1.8% SP

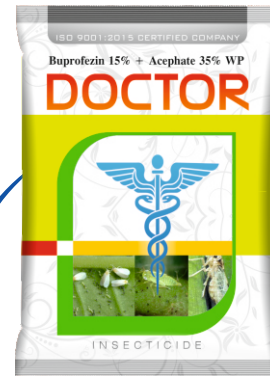
**PACKING :**  
100 gm, 250 gm, 500 gm,  
1 kg.



**DOCTOR**

Buprofezin 15% +  
Acephate 35% WP

**PACKING :**  
100 gm, 250 gm, 500 gm,  
1 Kg.



**TALLMAN**

Tolfenpyrad 15% EC

**PACKING :**  
100 ml, 250 ml, 500 ml,  
1 Ltr.



**ABAMECTIN 1.9% EC**

Packing : 20ml. (Pouch),  
100ml, 250ml, 500ml, 1 Ltr.

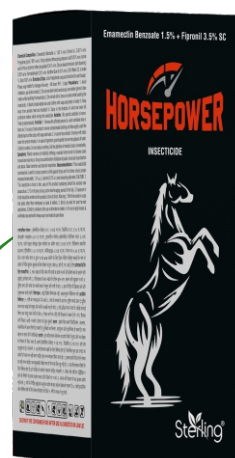
**Chini कम**<sup>®</sup>  
INSECTICIDE



**HORSE POWER**

Emamectine Benzoate 1.5%  
+ Fipronil 3.5% SC

**PACKING :**  
100 ml, 250 ml, 500 ml,  
1 Ltr.



**TANHAJI**

Permethrin 25% EC

**PACKING :**  
100 ml, 250 ml, 500 ml,  
1 Ltr.



**CIRCLE ULV**

Deltamethrin 1.25% ULV

**PACKING :**  
100 ml, 250 ml, 500 ml,  
1 Ltr.



**SAMRAT 80**

Fipronil 80% WG

**PACKING :**  
2 gm, 400 gm, 100 gm.



**FOJI**

Fenobucard (BPMC) 50% EC

**PACKING :**  
100 ml., 250 ml, 500 ml.,  
1 Ltr.



**SAMRAT 0.3 GR**

Fipronil 0.3% GR

**PACKING :**  
1 kg, 5 kg.



**NUFEN 0.4 DP**

Fenvalerate 0.4% DP

**PACKING :**  
5 kg, 10 kg, 25 kg.



**BAJIRAO**

Pymetrizone 50 % WG

**PACKING :**  
120 gm, 250 gm, 500gm,  
1 Kg.



**ZAMBA**

Novaluron 5.25% + Emamectin Benzoate 0.9% SC

**PACKING :**  
50 ml, 100 ml, 250 ml,  
500 ml, 1 Ltr.



**SARTHI**

Chlorpyrifos 16% + Alphacypermethrin 1% EC

**PACKING :**  
100 ml, 250 ml, 500 ml,  
1 Ltr.



**VEER ZARA**

Novaluron 5.25% + Indixacarb 4.5 % SC

**PACKING :**  
100 ml, 250 ml, 500 ml,  
1 Ltr.



**Emamectin Benzoate 1.9% EC**

**Packing :**  
20ml.(Pouch)  
50 ml, 100ml,  
250ml, 500ml, 1 Ltr.

**BAYO DOXA**<sup>®</sup>  
INSECTICIDE



**SAMBA 1.5 DP**

Chlorpyrifos 1.5% DP

**PACKING :**  
1 kg, 5 kg, 25 kg.



**REMOTE CONTROL**

Novaluron 10% EC

**PACKING :**  
100 ml, 250 ml., 500 ml,  
1 Ltr.



**CIRCLE 1.8**

Deltramethrin 1.8% EC

**PACKING :**  
100 ml, 250 ml., 500 ml,  
1 Ltr.



**GULABI**

Pyriproxifen 10% +  
Bifenthrin 10% EC

**PACKING :**  
100 ml, 250 ml., 500 ml,  
1 Ltr, 5 Ltr.



**FENPYROXIMATE 5% EC**

**PACKING :**  
20 ml, (Pouch)  
100 ml, 250 ml, 500 ml, 1 Ltr.

**SUNMITE**

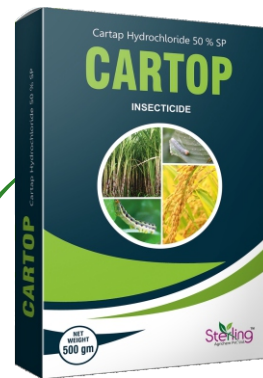




**CARTOP**

Cartap Hydrochloride 50% SP

**PACKING :**  
100 gm, 250 gm, 500 gm.



**CIRCLE 2.5 WP**

Deltamethrin 2.5% WP

**PACKING :**  
250 gm, 500 gm, 1 Kg,  
5 Kg.



**CARTOP 4 GR**

Cartap Hydrochloride 4% GR

**PACKING :**  
1 kg, 5 kg.



**STAR FURAN**

Carbofuran 3% CG

**PACKING :**  
1 kg, 5 kg.



# Coronite



**Chlorantraniliprole 18.5% w/w SC  
Insecticide**

**Packing : 10 ml, 30 ml,  
60 ml, 150 ml, 300 ml.**

**SAPIDE**

Acetamiprid 20% SP

**PACKING :**  
50 gm, 100 gm, 250 gm,  
500 gm.



**SAMURAI**

Cypermethrin 25% EC

**PACKING :**  
100 ml, 250 ml, 500 ml,  
1 Ltr.



**CIRCLE-2.8**

Deltamethrin 2.8% EC

**PACKING :**  
100 ml, 250 ml, 500 ml,  
1 Ltr.



**BAHADUR**

Diafenthiuron 47.8% SC

**PACKING :**  
100 ml, 250 ml, 500 ml,  
1 Ltr.



**PYRIPROXYFEN 10% EC**

**PACKING**  
30 ml. (Pouch)  
100 ml, 250 ml, 500 ml, 1 Ltr.



**MASCOT STRONG**

Lambda-Cyhalothrin  
4.9% CS

**PACKING :**  
100 ml, 250 ml, 500 ml,  
1 Ltr.



**MASCOT**

Lambda-Cyhalothrin 5% EC

**PACKING :**  
100 ml, 250 ml, 500ml,  
1 Ltr.



**NUFEN 20**

Fenvalerate 20% EC

**PACKING :**  
100 ml, 250 ml, 500 ml,  
1 Ltr.



**NISHAN**

Phenthoate 50% EC

**PACKING :**  
100 ml, 250 ml, 500 ml,  
1 Ltr.



**SUBEDAR**

Thiamethoxam 12.6% +  
Lambda Cyhalothrin 9.5% ZC

**PACKING :**  
40 ml, 100 ml,  
250 ml, 500 ml, 1 Ltr.



**INSECTICIDE**

**FIPPLE**

Fipronil 5% SC

**PACKING :**  
100ml, 250ml, 500ml,  
1 Ltr.



**MIDOR**

Imidacloprid 17.8% SL

**PACKING :**  
100ml, 250ml, 500 ml,  
1 Ltr.



**BANGSTAR**

Bifenthrin 10% EC

**PACKING :**  
100 ml, 250 ml, 500 ml,  
1 Ltr.



**XINGTARA**

Thiomethoxam 25% WG

**PACKING :**  
5 gm, 100 gm, 250 gm,  
500 gm, 1 kg.



**INSECTICIDE**

**CORONITE-GR**

CHLORANTRANILIPROLE  
0.4% GR

**PACKING :**  
1 Kg, 4 Kg.



**CHLORO TC**

Chloropyrifos 20% EC

**PACKING :**  
100 ml, 250 ml, 500 ml,  
1 Ltr, 5 Ltr.



**RUDRAX**

Emamectin Benzoate 5% SG

**PACKING :**  
5 gm, 50 gm, 100 gm,  
250 gm, 500 gm.



**CORALTRA**

CHLORANTRANILIPROLE  
35% WG

**PACKING :**  
17 gm, 34 gm, 86 gm,  
172 gm, 344 gm.



**AGGOR**

Dimethoate 30% EC

**PACKING :**  
100 ml, 250 ml, 500 ml,  
1 Ltr.



**HULK**

Acephate 95% SG

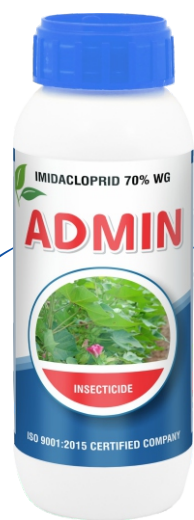
**PACKING :**  
250 gm, 500 gm, 1 kg.



**ADMIN**

Imidacloprid 70% WG

**PACKING :**  
30 gm, 75 gm, 150 gm,  
300 gm.



**GOCHU**

Imidacloprid 48% FS

**PACKING :**  
50 ml, 100 ml, 250 ml.



**BHIM**

Deltamethrin 11% EC

**PACKING :**  
100 ml, 250 ml, 500 ml,  
1 Ltr.



**PAJERO**

Profenophos 50% EC

**PACKING :**  
100 ml, 250 ml, 500 ml,  
1 Ltr, 5 Ltr.



**PAJERO SUPER**

Profenophos 40% +  
Cypermethrin 4% EC

**PACKING :**  
100 ml, 250 ml, 500 ml,  
1 Ltr, 5 Ltr.



**COLD FORCE**

Ethion 40% +  
Cypermethrin 5% EC

**PACKING :**  
100 ml, 250 ml, 500 ml,  
1 Ltr.



**CHLORO SUPER**

Chlorpyrifos 50% EC

**PACKING :**  
100 ml, 250 ml, 500 ml,  
1 Ltr, 5 Ltr.



**SHAKTIMAN-505**

Chlorpyrifos 50% +  
Cypermethrin 5% EC

**PACKING :**  
100 ml, 250 ml, 500 ml,  
1 Ltr, 5 Ltr.



**KESARI**

Thiamethoxam 30 % FS

**PACKING :**  
100 ml, 250 ml, 500 ml,  
1 Ltr.



**CIRCLE 2.5 SC**

Deltamethrin 2.5% SC

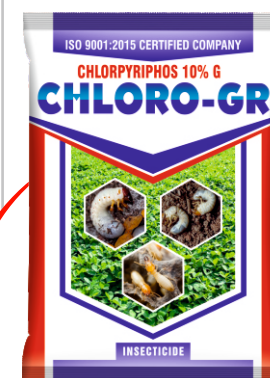
**PACKING :**  
100 ml, 250 ml, 500 ml,  
1 Ltr.



**CHLORO GR**

Chlorpyrifos 10% GR

**PACKING :**  
1 kg, 5 kg.



**MIDOR SUPER**

Imidaclopride 30.5% SC

**PACKING :**  
100 ml, 250, 500 ml, 1 Ltr.



**COMMANDER**

Fipronil 40% +  
Imidaclopride 40% WG

**PACKING :**  
6 gm, 40 gm,  
100 gm, 250 gm,



**INSECTICIDE**

**DRONA**

Diafenthiuron 50% WP

**PACKING :**  
100 gm, 250 gm, 500 gm,  
1 kg.



**CAPTAN 75**

Captan 75% WP

**PACKING :**  
100 gm, 250 gm, 500 gm,  
1 kg.



**TRIDENT 50**

Temephos 50 % EC

**PACKING :**  
1 Ltr, 5 Ltr, 10 Ltr.



**TRIDENT**

Temephos 1% SG

**PACKING :**  
1 kg.

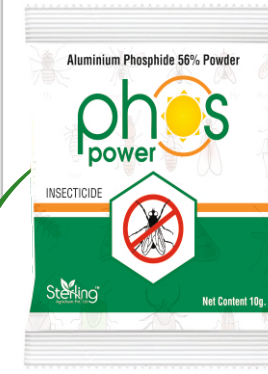


**INSECTICIDE**

**PHOS POWER**

Alluminium Phosphide  
56% Powder

**PACKING :**  
10 gm.



**SYBER-1DP**

Cypermethrin 1% DP

**PACKING :**  
5 kg, 10 kg, 25 kg.



**SYBER 0.25 DP**

Cypermethrin 0.25 % DP

**PACKING :**  
5 kg, 10 kg, 25 kg.



**MALTOZ**

Malathion 5% DP

**PACKING :**  
5 kg, 10 kg, 25 kg.



**CAPTAN 50**

Captan 50% WP

**PACKING :**  
250 gm, 500 gm, 1 kg,  
2 kg.



**GULABO**

Cymoxonil 80% WP

**PACKING :**  
100 gm, 250 gm, 500 gm.



**SOLE**

Metalaxyl 35% WS

**PACKING :**  
250 gm, 500 gm, 1 kg.



# SENAPATI

DINOTEFURAN 20% w/w SG

**PACKING**  
8 gm, (Pouch)  
50 gm, 100 gm, 250 gm, 500 gm.





**MAZORE**

Difeconazole 25% EC

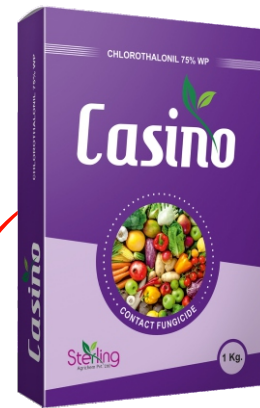
**PACKING :**  
100 ml, 250 ml, 500 ml,  
1 Ltr.



**CASINO**

Chlorothalonil 75 % WP

**PACKING :**  
100 gm, 250 gm, 500 gm,  
1 kg.



**CHATUR**

Kasugamycin 3 % SL

**PACKING :**  
50 ml, 100 ml, 250 ml,  
500 ml, 1 Ltr.



**HITLER**

Azoxystrobin 11% +  
Tebuconazole 18.3% SC

**PACKING :**  
50 ml, 100ml, 250ml, 500ml,  
1 Ltr.



**Natraj**  
Gibberellic acid 0.001% SL

**PACKING**  
30 ml. (Pouch)  
100 ml, 250 ml, 500 ml, 1 Ltr, 5 Ltr.

**AZOXY**

**Azoxystrobin 23% SC**

**PACKING :**  
100 ml, 250 ml, 500 ml,  
1 Ltr.



**MASTANI**

**Thifluzamide 24 % SC**

**PACKING :**  
75 ml, 150 ml, 500 ml,  
1 Ltr.



**GORA**

**Propiconazole 13.9% +  
Difenoconazole 13.9 % EC**

**PACKING :**  
100 ml, 250 ml, 500 ml,  
1 Ltr.



**JAWAAN**

**Azoxystrobin 18.2% +  
Difenoconazole 11.4 % SC**

**PACKING :**  
100 ml, 200 ml, 500 ml,  
1 Ltr.



**ADOLF**

**Azoxystrobin 16.7% +  
Tricyclazole 33.3% SC**

**PACKING :**  
100 ml, 250 ml, 500 ml,  
1 Ltr.



**VALUE**

**Propiconazole 25% EC**

**PACKING :**  
100 ml, 250 ml, 500 ml,  
1 Ltr.



**FUNGICIDE**

**SHATRU**

**Metalaxyl 8 % +  
Mancozeb 64 % WP**

**PACKING**

25 gm, 100 gm, 250 gm,  
500 gm.

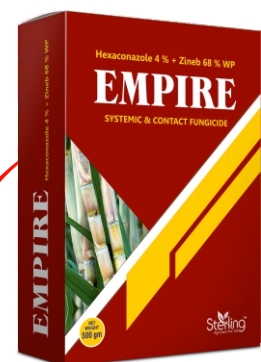


**EMPIRE**

**Hexaconazole 4 % +  
Zineb 68 % WP**

**PACKING**

100 gm, 250 gm, 500 gm,  
1 kg.

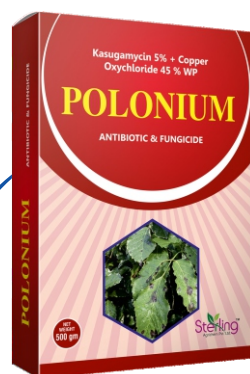


**POLONIUM**

**Kasugamycin 5 % +  
Copper Oxychloride 45 % WP**

**PACKING**

50 gm, 100 gm, 250 gm,  
500 gm, 1 kg.



**TOP-UP**

**Thiophanate Methyl 70 % WP**

**PACKING**

100 gm, 250 gm, 500 gm,  
1 kg.



**FUNGICIDE**

**THUNDER**

**Tricyclazole 75% WP**

**PACKING :**

25 gm, 120 gm, 250 gm.



**BHISMA**

**Captan 70% +  
Hexaconazole 5 % WP**

**PACKING :**

100 gm, 250 gm, 500 gm,  
1 kg.



**ZONAL**

**Propineb 70% WP**

**PACKING :**

100 ml, 250 gm, 500 gm,  
1 kg.



**DARBAR**

**Cymoxanil 8 % +  
Mancozeb 64 % WP**

**PACKING :**

100 gm, 300 gm, 600 gm,  
1200 gm.



**FUNGICIDE**

**STAR CYCLINE**

Streptomycin +  
Tetracycline (90+10)

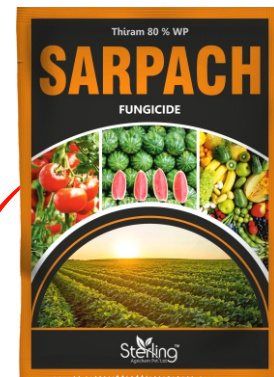
**PACKING :**  
6 gm.



**SARPACH**

Thiram 80% WP

**PACKING :**  
500 gm, 1 kg.



**BOTTOM**

Hexaconazole 5% +  
Validamycin 2.5% SC

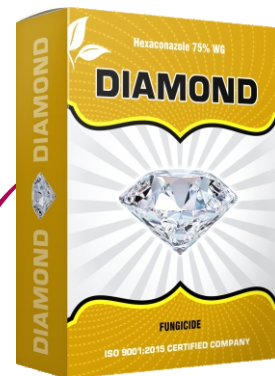
**PACKING :**  
250ml, 500 ml, 1 Ltr.



**DIAMOND**

Hexaconazole 75% WG

**PACKING :**  
6 gm, 30 gm, 100 gm,  
250 gm.



**FUNGICIDE**

**COZYSULF SUPER**

Sulphur 55.16% SC

**PACKING :**  
500 ml, 1 Ltr, 5 Ltr.



**MAPLE**

Thiophanate Methyl 70% WP

**PACKING :**  
250 gm, 500 gm, 1 kg.



**HEXOL**

Hexaconazole 5% EC

**PACKING :**  
250 ml, 500 ml, 1 Ltr,  
5 Ltr.



**HEXOL PLUS**

Hexaconazole 5% SC

**PACKING :**  
250 ml, 500 ml, 1 Ltr,  
2.5 Ltr, 5 Ltr.



**AGRISTIN**

Carbendazim 50% WP

**PACKING :**  
100 gm, 250 gm, 500 gm,  
1 kg.



**SWADESH**

Tebuconazole 10% +  
Sulphur 65% WG

**PACKING :**  
100 gm, 250 gm, 500 gm,  
1 kg.



**AGRI SULF**

Lime Sulphur 22% SC

**PACKING :**  
1 Ltr, 5 Ltr, 10 Ltr, 20 Ltr.



**BLUE COPEX**

Copper Oxychloride 50% WP

**PACKING :**  
500 gm, 1 Kg.



**KING**



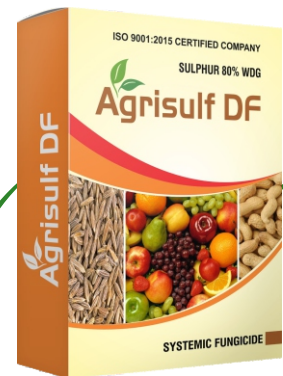
**Azoxystrobin 4.8 % +  
Chlorothalonil 40 % SC**

**PACKING :**  
150 ml, 300 ml, 600 ml.

**AGRISULF DF**

Sulphur 80% WDG

**PACKING :**  
1 kg, 3 kg, 5 kg.



**AGRISULF-WP**

Sulphur 80% WP

**PACKING :**  
1 kg.



**AGRISULF DP**

Sulphur 85% DP

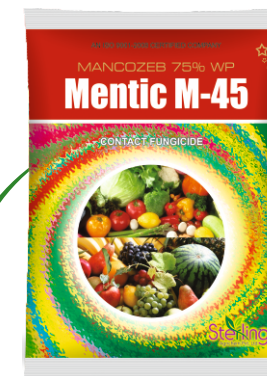
**PACKING :**  
1 Kg, 5 Kg, 10 kg,  
25 kg.



**MENTIC-M-45**

Mencozeb 75% WP

**PACKING :**  
100 gm, 250 gm, 500 gm,  
1 kg.



**VAALIDA**

Validamycin 3% L

**PACKING :**  
250 ml, 500 ml, 1 Ltr.



**DANGAL**

Azoxystrobin 7.1% +  
Propiconazole 11.9% SE

**PACKING :**  
100 gm, 250 ml, 500 ml,  
1 Ltr.



**SAKHA**

Carbendazim 12% +  
Mencozeb 63% WP

**PACKING :**  
50 gm, 100 gm, 250 gm,  
500 gm, 1 kg.



**DABBANG 10-WP**

Lambda-Cyhalothrin 10% WP

**PACKING :**  
62.5 gm.



**MAGNUM-WP**

Alphacypermethrin 5 % WP

**PACKING :**  
250 gm, 500 gm, 1 kg.



**TEN STAR**

Bifenthrin 10 % WP

**PACKING :**  
62.5 gm.



**NAGIN**

Zinc Phosphide 80 %

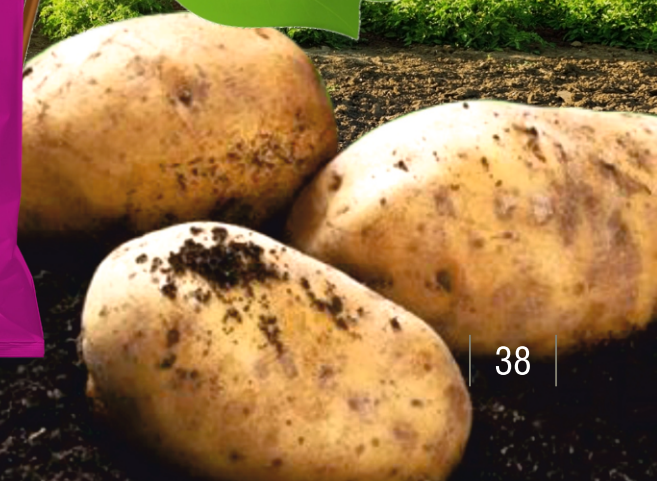
**PACKING :**  
10 gm, 100 gm, 500 gm.



# Messi

Amino Acid & Vitamins

**PACKING**  
10 ml, (Pouch)  
50 ml, 100 ml, 250 ml.



**MAGNUM-EC**

Alphacypermethrin 10 % EC

**PACKING :**  
100 ml, 250 ml, 500 ml,  
1 Ltr.



**TEN STAR 2.5**

Bifenthrin 2.5 % EC

**PACKING :**  
250 ml, 500 ml, 1 Ltr.



**DABBANG 97-CS**

Lambda-Cyhalothrin 9.7% CS

**PACKING :**  
50 ml, 100 ml, 250 ml,  
500 ml, 1 Ltr.



**MAGNUM-SC**

Alphacypermethrin 10 % SC

**PACKING :**  
100 ml, 250 ml, 500 ml,  
1Ltr.



**HAREKALA**

Chlormequat Chloride  
50 % SOL

**PACKING :**  
100 ml, 250 ml, 500 ml,  
1 Ltr.



**JAGUAR**

Ethephon 39 % SL

**PACKING :**  
100 ml, 250 ml, 500 ml,  
1 Ltr.



**AGRI MORE EC**

Tricontanol 0.05 % EC

**PACKING :**  
100 ml, 250 ml, 500 ml,  
1 Ltr.



**AUSTAR**

Paclobutrazol 23 % SC

**PACKING :**  
50 ml, 100 ml, 250 ml,  
500 ml, 1 Ltr.





### COZY GOLD

Sulphur 90%  
(Granular)

PACKING : 3 KG,  
15 KG, 30 KG



# TITAN SUPER

Quizalofop Ethyl 10% EC

PACKING :  
100 ml, 250 ml, 500 ml, 1 Ltr.



**BLACK GOLD-95**

Humic Acid 95%

**PACKING :**  
100 gm, 250 gm, 500 gm,  
1 kg.



**SURAKSHA**

Silicon Based Spreader

**PACKING :**  
5 ml, 50 ml, 100 ml,  
250 ml, 500 ml.



**FLOWER PLUS**

Amino Acid 85%

Packing : 300 g



**GAZATE**

Paclobutrazol 40 % SC

**PACKING :**  
50 ml, 100 ml, 250 ml,  
500 ml, 1 Ltr.



**TILAK**

Mepiquat Chloride 5 % AS

**PACKING :**  
100 ml, 250 ml, 500 ml,  
1 Ltr.



**ASPIRE**

Triaccontanol 0.1% EW

**PACKING :**  
100 ml, 250 ml, 500 ml,  
1 Ltr.



**BHASM-58**

2,4 -D Amine Salt 58 % SL

**PACKING :**  
400 ml, 1 Ltr.



**TROY-32**

Pendimethalin 30% +  
Imezathapyer 2 % EC

**PACKING :**  
500 ml, 1 Ltr, 5 Ltr.



**CLEAN BOLD**

Pretilachlor 50 % EC

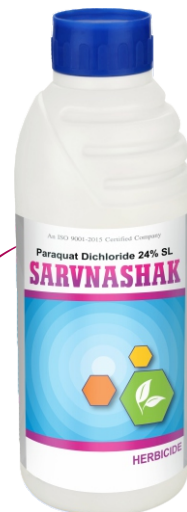
**PACKING :**  
250 ml, 500 ml, 1 Ltr,  
5 Ltr.



**SARVNASHAK**

Paraquat Dichloride 24 % SL

**PACKING :**  
250 ml, 500 ml, 1 Ltr,  
5 Ltr.



**SWIPE SUPER**

Fenoxaprop-p-Ethyl 10% EC

**PACKING**  
100 ml, 250 ml, 500 ml,  
1 Ltr.



**PENDIMAX**

Pendimethalin 30% EC

**PACKING :**  
250 ml, 500 ml, 1 Ltr,  
5 Ltr.



**TORAN**

Oxyflourfan 2.5% +  
Amie salt of Glyphosate 41%

**PACKING :**  
250 ml, 500 ml, 1 Ltr.



**GARUDA**

Pendimethalin 38.70% SC

**PACKING :**  
300 ml, 700 ml, 3.5 Ltr.



**CHAKRA**

TEMBOTRIONE 34.4% SC

PACKING :  
57.5 ml, 115 ml, 230 ml.



**SAPERA**

Metribuzin 70 % WP

PACKING :  
100 gm, 250 gm, 500 gm,  
1 Kg.



**JIDDI**

Metsulfuron Methyl 10 % +  
Chlorimuron Ethyl 10 % WP

PACKING :  
8 gm.



**MIRZA**

Clodinafop-Propargyl  
15 % WP

PACKING :  
160 gm.



**MUSA**

Bispyribac Sodium 10 % SC

PACKING :  
10 ml, 50 ml, 100 ml,  
250 ml, 500 ml, 1 Ltr.



**AKHAL TEKE**

Solfosulfuron 75 % WG

PACKING :  
6.75 gm, 13.5 gm, 250 gm.



**ATRASINE**

Atrazine 50% WP

PACKING :  
250 gm, 500 gm.



**ERASER**

Butachlor 50 % EC

PACKING :  
500 ml, 1 Ltr.



**SAMSHER**

Imazethapyr 10 % SL

**PACKING :**  
250 ml, 500 ml, 1 Ltr.



**BHASM-38**

2,4-D Ethyl Ester 38 % EC

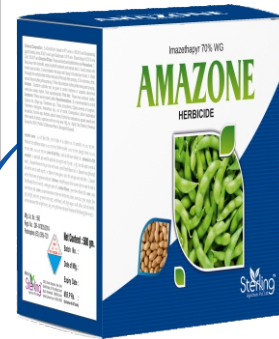
**PACKING :**  
250 ml, 500 ml, 1 Ltr.



**AMAZONE**

Imazethapyr 70 % WG

**PACKING :**  
50 gm, 250 gm.



**MANTRA-71**

Ammonium Salt of  
Glyphosate 71% SG

**PACKING :**  
100 gm.



**TUMBLE SUPER**

Quizalofop Ethyl 5% EC

**PACKING :**  
100 ml, 250 ml, 500 ml,  
1 Ltr.



**GALLON**

Oxyflourfen 23.5% EC

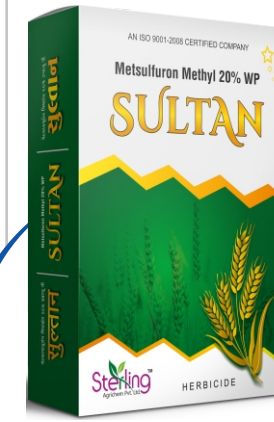
**PACKING :**  
50 ml, 100 ml, 250 ml.



**SULTAN**

Metsulfuron Methyl 20% WP

**PACKING :**  
8 gm. + 200 ml.



**GLYSATE**

Glyphosate 41% SL

**PACKING :**  
500 ml, 1 Ltr, 5 Ltr.

